



Practical Exams

Grade 6 - Language

Computer - Second term



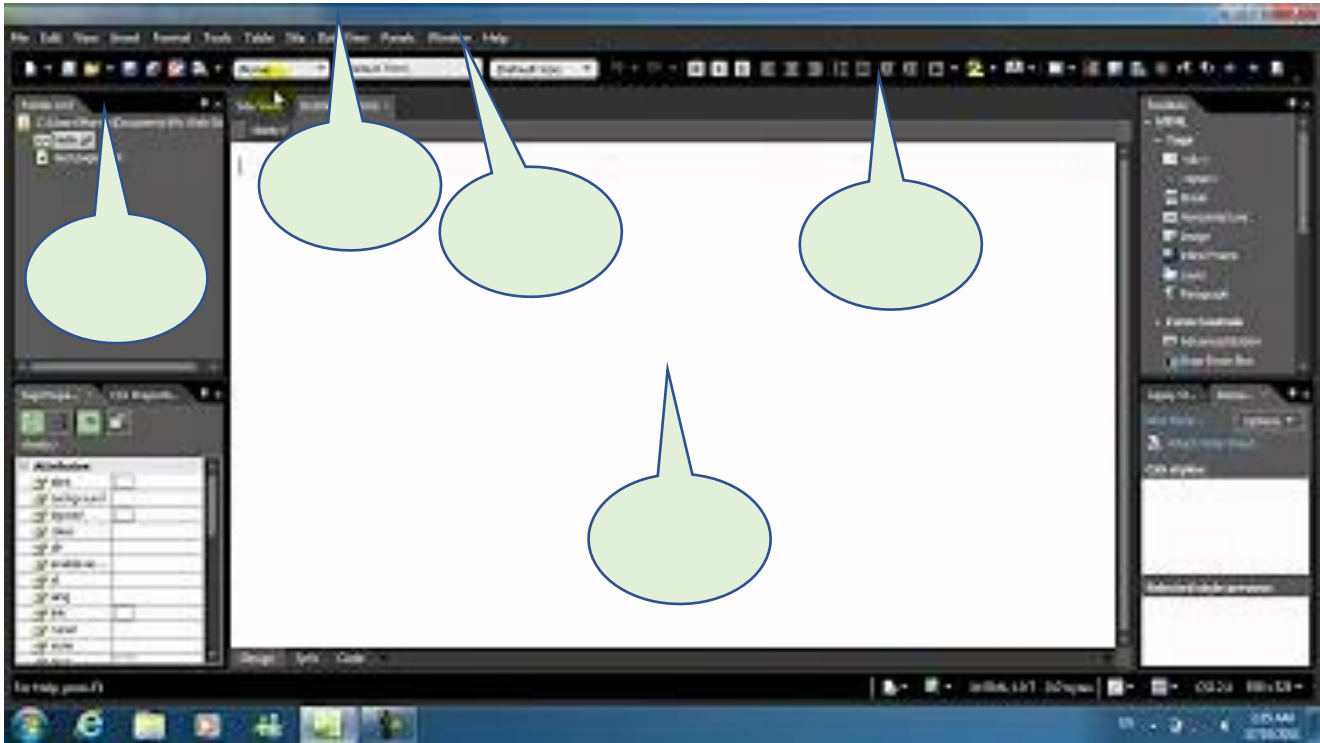
إعداد وتصميم / فريق أصدقاء الكمبيوتر المتخصص – أ/ فاتن أحمد مصطفى

إعداد وتصميم / فريق أصدقاء الكمبيوتر المتخصص – أ/ فاتن أحمد - أ/ إيمان مسلم



Model 1

From your computer point the components of MS-Expression Screen then write them on the answer paper



Model 1

From your computer point the components of MS-Expression Screen then write them on the answer paper

.....

.....

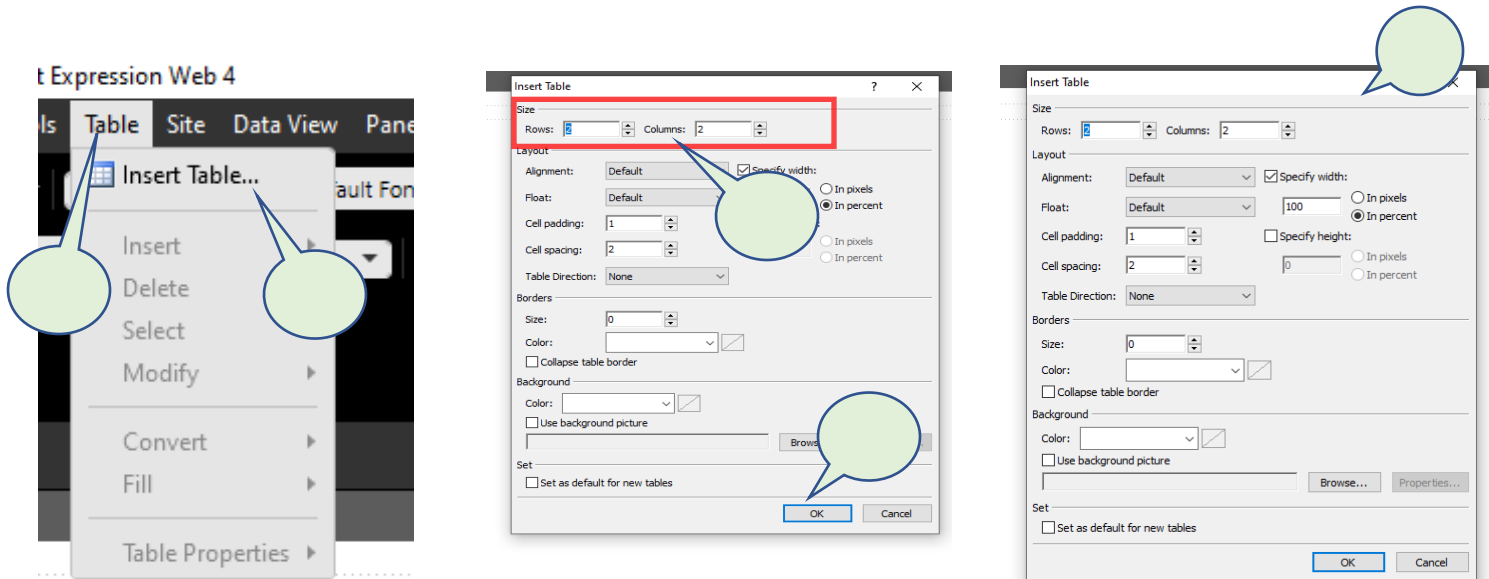
.....

.....



Model 2

From your computer insert a table in the web page contains (3 Rows and 4 columns) then write the steps you followed:



Model 2

From your computer insert a table in the web page contains (3 Rows and 4 columns) then write the steps you followed:

Press on the Table Menu () A dialogue box will appear ()

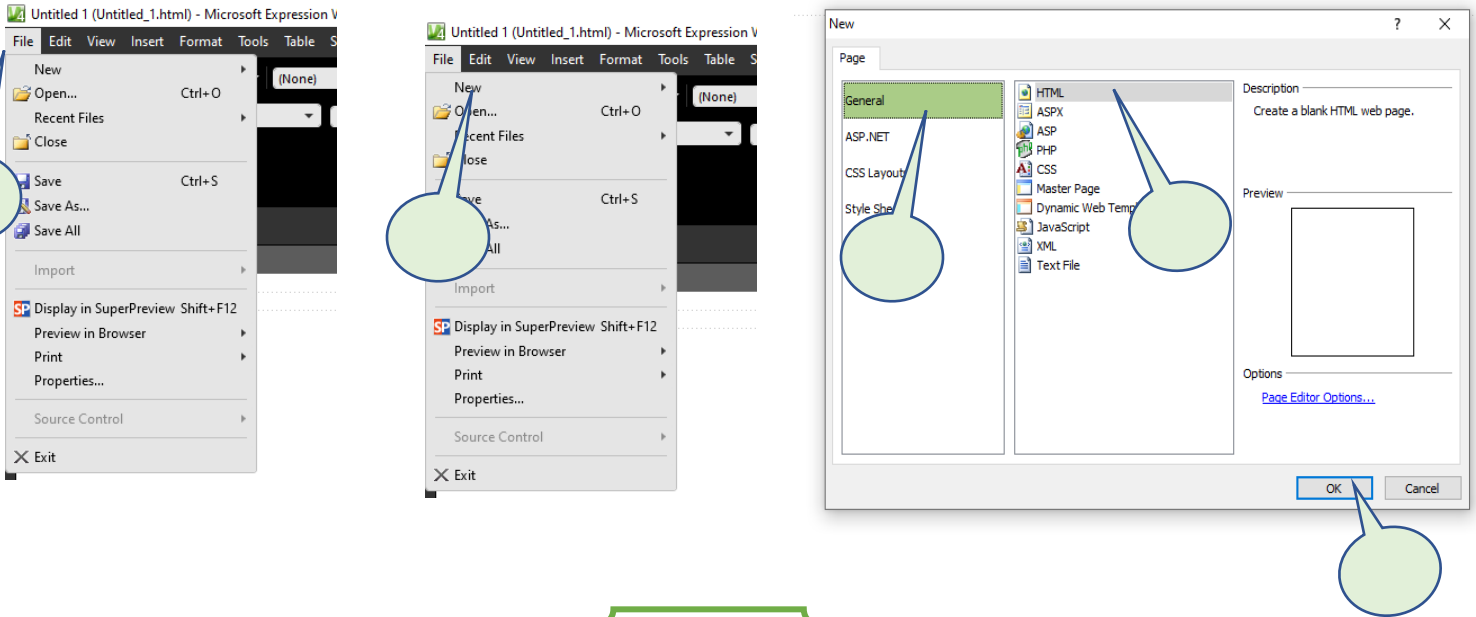
Choose "Insert Table" () Press "OK" ()

Select the number of columns and rows ()



Model 3

From your computer insert a new web page then write the steps you followed:



Model 3

From your computer insert a new web page then write the steps you followed:

Choose “New” then choose “Page” ()

Choose “General” ()

Choose “html” ()

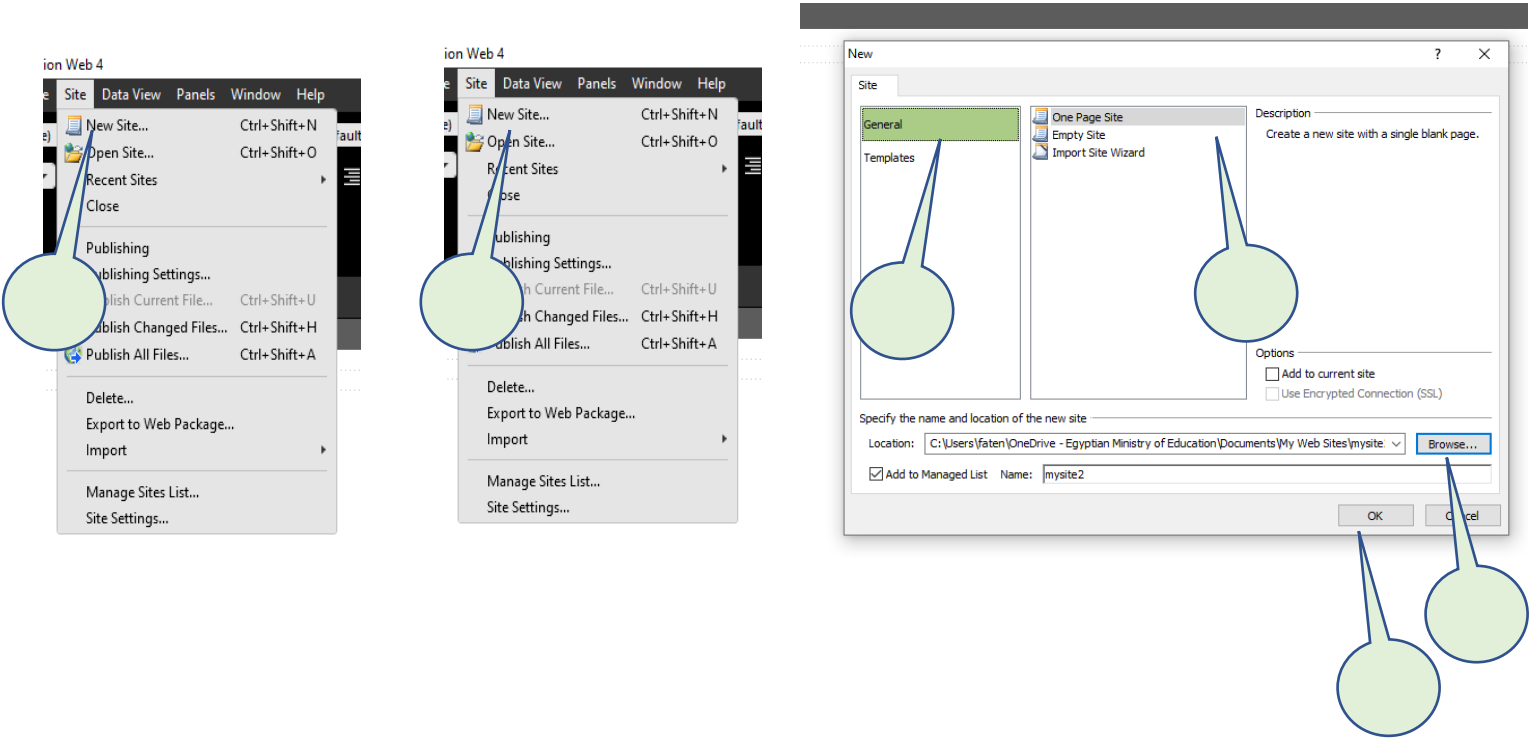
Click the “File” menu ()

Click “OK” ()



Model 4

From your computer insert a new web site then write the steps you followed:



Model 4

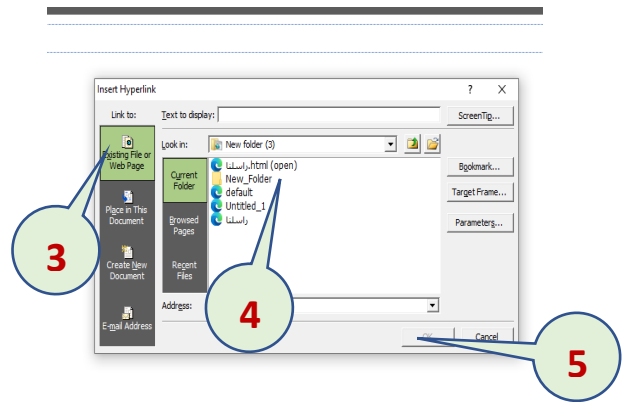
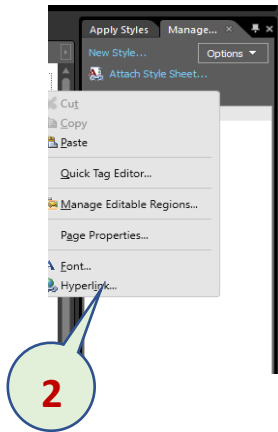
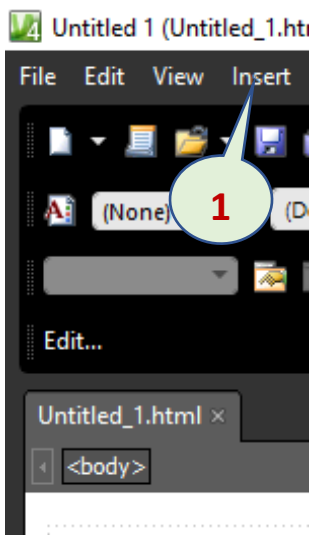
From your computer insert a new web site then write the steps you followed:

- Choose "New" then choose "Site" () Click "OK" ()
- Choose "One only site" () Click the "File" menu ()
- Choose "General" () Select the saving place ()



Model 5

From your computer insert a Hyperlink that moves you to **راسلنا** Webpage then write the steps you followed:



Model 5

From your computer insert a Hyperlink that moves you to **راسلنا** Webpage then write the steps you followed:

Choose "Hyperlink" () Open "Insert" menu ()

Click "OK" () Select Page "راسلنا" ()

From the "Link To", press Existing File or web Page ()



Answers

Practical Exams

Grade 6 - Language

Computer - Second term



إعداد وتصميم / فريق أصدقاء الكمبيوتر المتخصص - أ/ فتن أحمد مصطفى

إعداد وتصميم / فريق أصدقاء الكمبيوتر المتخصص - أ/ فتن أحمد - أ/ إيمان مسلم



Practical Exams

Grade 6 - Language

Computer - Second term



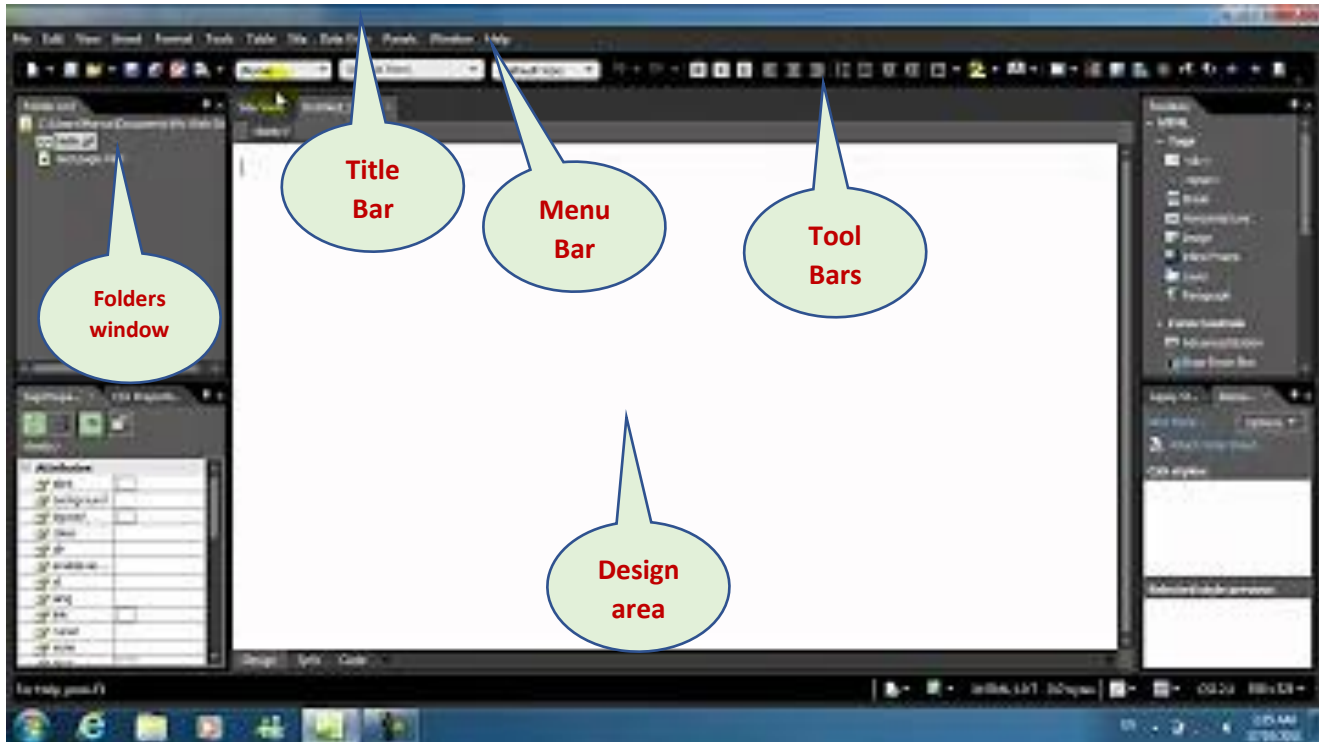
إعداد وتصميم / فريق أصدقاء الكمبيوتر المتخصص - أ/ فاتن أحمد مصطفى



إعداد وتصميم / فريق أصدقاء الكمبيوتر المتخصص - أ/ فاتن أحمد - أ/ إيمان مسعود

Model 1

From your computer point the components of MS-Expression Screen then write them on the answer paper



Model 1

From your computer point the components of MS-Expression Screen then write them on the answer paper

Menus Bar

Title Bar

Folders Window

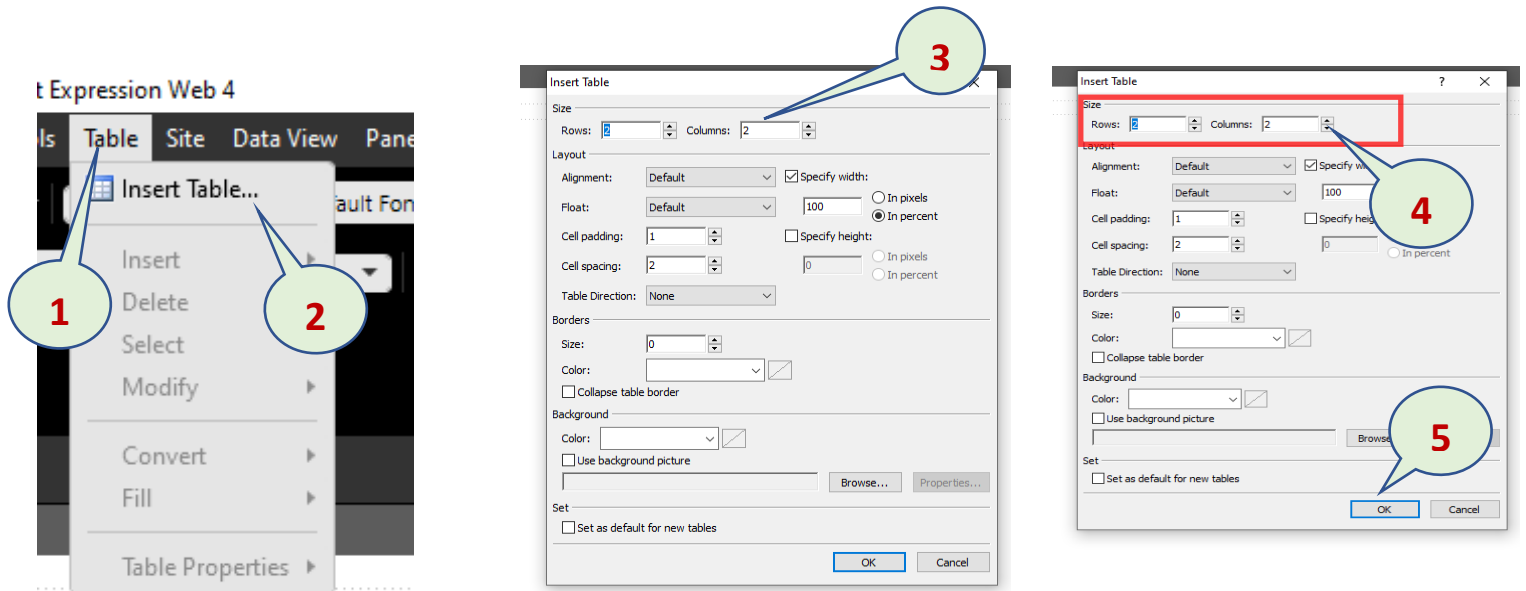
Tool Bar

Design Area



Model 2

From your computer insert a table in the web page contains (3 Rows and 4 columns) then write the steps you followed:



1- Press on the Table Menu

2- Choose "Insert Table"

3- A dialogue box will appear

4- Select the number of columns and rows

5- Press "OK"

Model 2

From your computer insert a table in the web page contains (3 Rows and 4 columns) then write the steps you followed:

Press on the **Table** Menu (**1**)

A dialogue box will appear (**3**)

Choose "**Insert Table**" (**2**)

Press "**OK**" (**5**)

Select the number of columns and rows (**4**)



Model 3

From your computer insert a new web page then write the steps you followed:

1- Open File Menu

2- Click New Page

3- click General

4- Click Html

5- Click OK

Model 3

From your computer insert a new web page then write the steps you followed:

Choose "New" then choose "Page" (2)

Choose "General" (3)

Choose "html" (4)

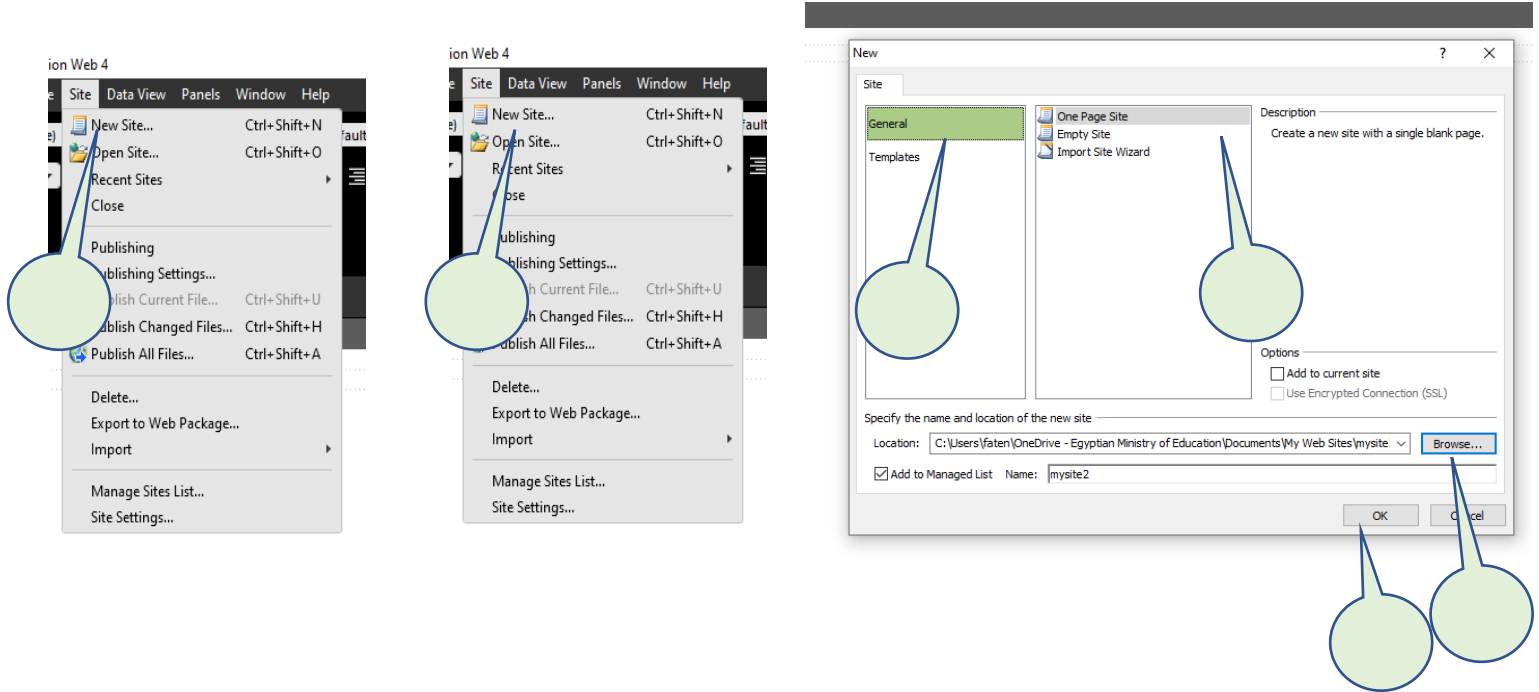
Click the "File" menu (1)

Click "OK" (5)



Model 4

From your computer insert a new web site then write the steps you followed:



1- Open Site Menu

2- Click New Site

3- click One Page Site

4- Click saving place

5- Click OK

Model 4

From your computer insert a new web site then write the steps you followed:

Choose "New" then choose "Site" (2) Click " OK" (6)

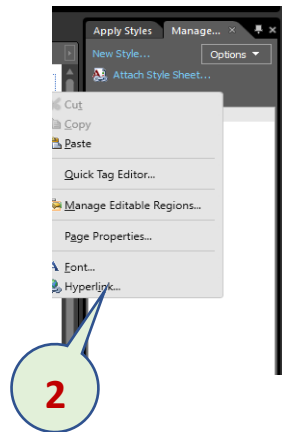
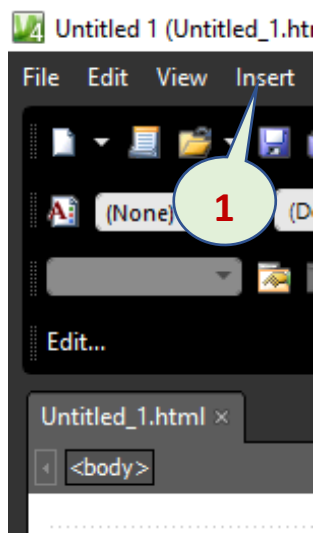
Choose " One only site " (4) Click the "File " menu (1)

Choose "General" (3) Select the saving place (5)



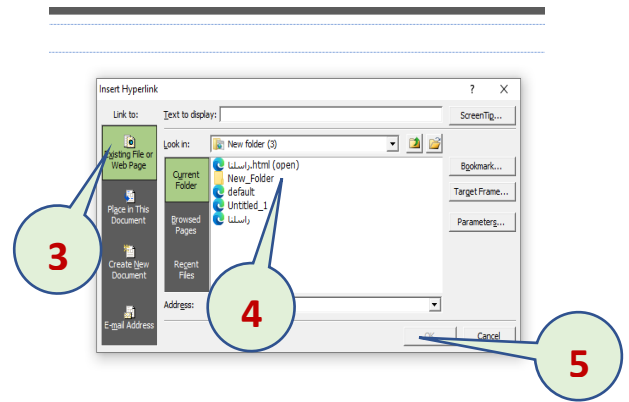
Model 5

From your computer insert a Hyperlink that moves you to **راسلنا** Webpage then write the steps you followed:



1- Open Insert Menu

2- Click Hyperlink



3- Exciting File or Web Page 4- Click **راسلنا**

5- Click OK

Model 5

From your computer insert a Hyperlink that moves you to **راسلنا** Webpage then write the steps you followed:

Choose “Hyperlink” (2) Open “Insert” menu (1)

Click “OK” (5) Select Page "**راسلنا**" (4)

From the “Link To”, press Exciting File or web Page (3)